

NetdB: Sound and Vibration at a glance

The Application "core" of your Sound & Vibration job

Whatever your S&V application is, NetdB represent a valid solution in terms of performance and exceptional low price!

Combined with the huge offer of scientific software from 01dB-Metravib, embedding over 40 years of proven experience in Sound and Vibration engineering, NetdB becomes a "all in one" solution to answer for measurements and analysis issues in *Environmental* as well as *Industrial* applications.

All softwares available offer "high end" functionalities for specific request and not only exchange data among all of them, or versus external vendors systems, but it is also possible to concatenate different applications starting from basic ones such: **dBFA** as General Purpose S&V and NVH solution, **dBENV** for Environmental and **dBbati** for Building Acoustic, going automatically to Sound perception with **dBsonic**, Modal Analysis with **MEScope**, Sound Power with **dBPower**, Sound images with **dBVision**, Material Testing with **dBFA80** series and, last but not least to standard R&D development environments such Matlab, LabView, C++, dot-NET, or using embedded TCP-IP commands.



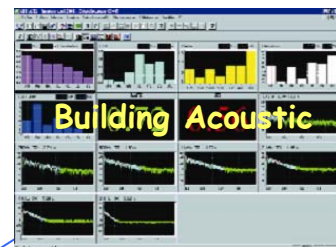
NetdB 4-20 channels



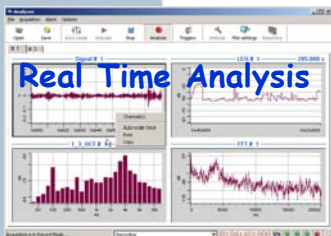
Signal Recording



Environmental Noise



Building Acoustic



Real Time Analysis



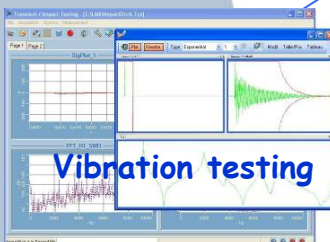
Sound Power



All you can do with the NetdB



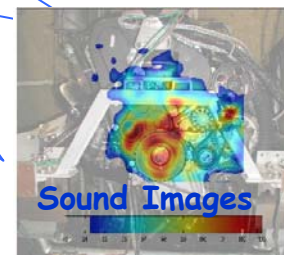
Sound Quality



Vibration testing



Materials testing



Sound Images

And more



NetdB Technical Specifications

Inputs

BNC/IEPE – Lemo/200V – Intensity Probe – Cortex Head
 Single unit from 4 up to 20 channels Real Time 24bits, 51.2 kHz
 More than 5 units in cascade with same performances

Data storage and Communications

Internal HD 100 Gb, 4 x USB, 2 x Ethernet, WiFi

WiFi connection

Same performance without physical link to the front-end!
 (54Mbits/s – More than 20 channels @ 24 bits – 51.2 kHz
 frequency sampling)

Internet connexion

TPC/IP based communication protocol
 Efficient Ethernet link
 High rate of data transfer (100Mbits/s – More than 40 channels
 @ 24 bits - 51200 Hz frequency sampling)
 Distant connection between control PC and front-end/sensors
 (Up to 100 meters)

Windows XP Embedded

NetdB hosts a PC & 100 GB HDD inside! (12 Hours recording
 with 12 channels @ 24 bits - 51200 Hz frequency sampling)
 → This provides NetdB with 'PC-equivalent communication
 capabilities'

Patented Synchronization protocol

Any single unit of NetdB stays aside sensors/test equipment
 Link to the control station through Ethernet cable
 This single cable cares for data transfer and synchronization!

Accessories



Microphones



Preamplifiers



Accelerometers



Impact hammer



Sound Calibrator



Sound Sources



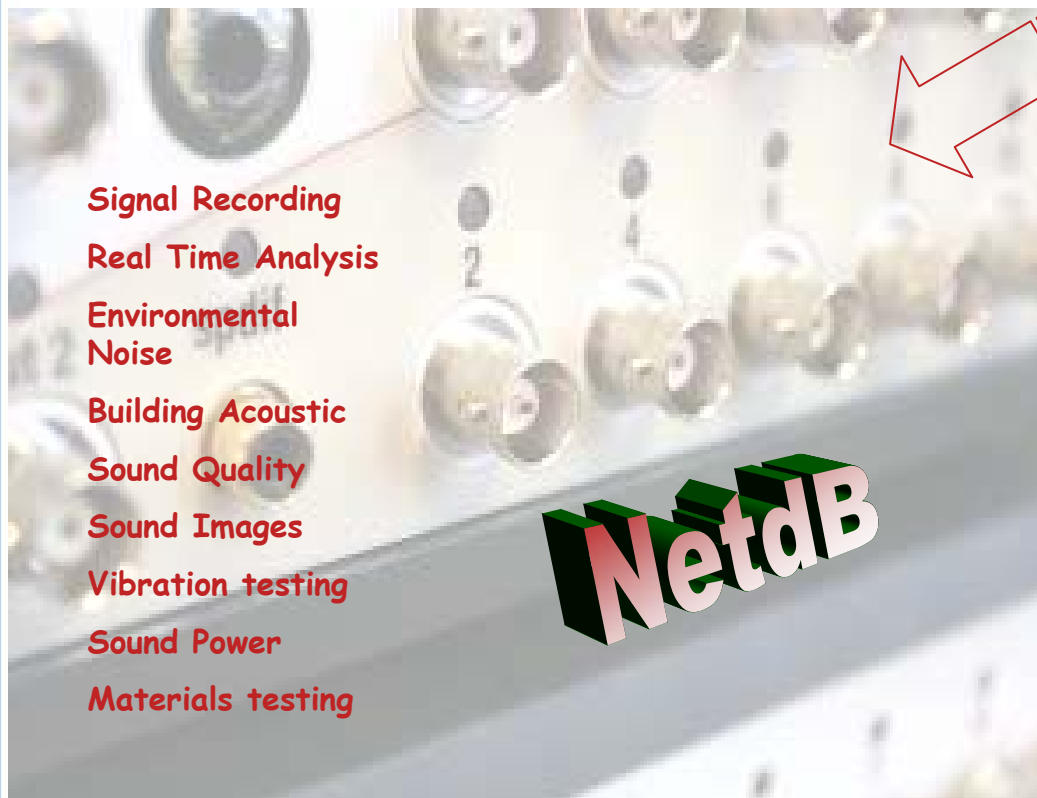
Vibration Calibrator



Recording Head



Binaural Recording



Signal Recording

Real Time Analysis

Environmental
Noise

Building Acoustic

Sound Quality

Sound Images

Vibration testing

Sound Power

Materials testing



Sound Intensity



Sound Holography



Remote Control

01dB

01dB-Metravib

200, Chemin des Orrmeaux
 F-69578 Limonest Cedex
 Tel. +33 (0)4 7252 4800
 Fax +33 (0)4 7252 4747

environment@01db-metravib.com
 www.01db.com

AREVA